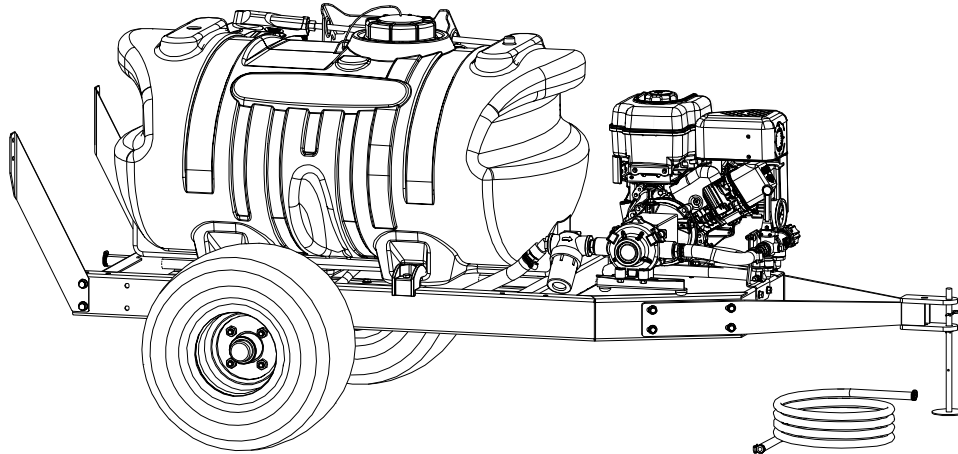


# OWNER'S MANUAL

**Model: FSTS-60-B6.5-8C-BLK (5301450-BLK)**

**Model: FSTS-60-B6.5-8C-BLU (5301450-BLU)**

(60 Gallon Trailer Sprayer w/205cc B&S Engine,  
8-Roller Pump & Deluxe Handgun, Boom-Ready)



**WARNING:** Cancer and Reproductive Harm.  
[www.P65Warnings.ca.gov](http://www.P65Warnings.ca.gov)



**WARNING:** To reduce the risk of injury, the user must read and understand the operator's manual before using this product.

## General Information

Thank you for purchasing this product. The purpose of this manual is to assist you in operating and maintaining your trailer sprayer.



**NOTE:** Maximum Speed - 10 MPH  
Refer to vehicle's manual for towing instructions.

### BEFORE RETURNING THIS PRODUCT FOR ANY REASON, PLEASE CALL

<b>BAKERSFIELD, CA</b> 877-724-2236	<b>COLUMBUS, NE</b> 800-274-1025	<b>DOTHAN, AL</b> 800-227-4098
<b>FARGO, ND</b> 701-280-2862	<b>HOPKINSVILLE, KY</b> 800-637-7172	<b>MANKATO, MN</b> 507-388-6295
<b>NEWTON, KS</b> 800-394-7662	<b>PASCO, WA</b> 800-634-2026	<b>TEMPE, AZ</b> 877-974-7166

### **IMPORTANT REMINDER:**

Add proper oil to the engine crankcase and gasoline to the gas tank. Refer to the engine manual for the correct type and amount.

If you should have a question or experience a problem with your Ag Spray Product: Visit our website @ [www.agspray.com](http://www.agspray.com) or call the Toll free number above. Our technical support representatives will be happy to help you.

In most cases a customer service rep. can resolve the problem over the phone.

To obtain prompt, efficient service, always remember to give the following information....

- Correct Part Description and/or part number
- Model number and Serial Number

Part descriptions and numbers can be obtained from the illustrated parts list section(s) of this manual.

### **\*\*\*WARNING\*\*\***

This product when used can be dangerous and can cause bodily harm, if not properly used or guarded.

**\* STAY AWAY FROM EQUIPMENT  
WHEN IT IS IN OPERATION \***

Read information and the full instructions furnished with the product before installing and operating.

**Retain a copy of your receipt for your unit, as it will be required to validate any warranty service.**

**Warranted against manufacturer or workmanship defects from date of purchase with copy of receipt:**

**Homeowner Usage: One Year**

**Commercial Usage: 90 Days.**



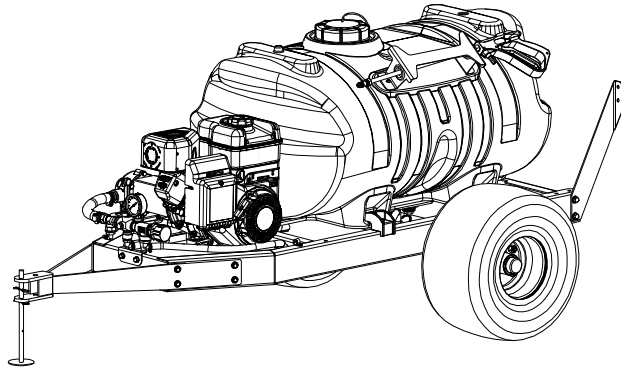
[www.agspray.com](http://www.agspray.com)

[5194704

(12/22)]

## Contents

Technical Specifications.....	2	DirectoValve Exploded View/Parts List.....	7
Sprayer Assembly Instructions .....	3	Pressure Relief Valve Exploded View/Parts List.....	7
Operation and Tank Care.....	4	Sprayer Exploded Views.....	8 - 10
Maintenance and Winter Storage .....	5	Sprayer Parts List.....	9
Roller Pump Exploded View/Parts List .....	5	Sprayer Dimensions .....	11
Pump Operations/Maintenance/Troubleshooting.....	6	Warranty .....	12



**Model: FSTS-60-B6.5-8C**  
**(5301450-BLK) (5301450-BLU)**  
 (60 Gallon Trailer Sprayer w/205cc B&S Engine,  
 8-Roller Pump & Deluxe Handgun, Boom-Ready)

### Technical Specifications

- 205cc Briggs & Stratton Engine w/Gear Reduction
- 8 Roller Pump, Reverse Rotation (Cast Iron)
- Deluxe Pistol Grip Handgun W/25' of Hose
- Pneumatic Tires: 18 x 850 x 8
- Maximum Speed - 10 MPH
- Boom-Ready

**Caution: Always check the vehicle load rating before using the sprayer.**  
**The loaded weight of this sprayer and boom assembly is approx.: 830 lbs. when the tank is full.**  
**This sprayer is designed to be towed behind a garden tractor.**

### ~~~~~IMPORTANT~~~~~

Remove tank lid and be sure the tank is clean and free of any foreign material. Rinse tank out of any tank residue before filling with water to test.

### ~~~~~IMPORTANT~~~~~

It is VERY important to test this sprayer with plain water before actual spraying is attempted. This will enable you to familiarize yourself with the sprayer and check for leaks without the possibility of losing any expensive chemicals.

### ~~~~~WARNING~~~~~



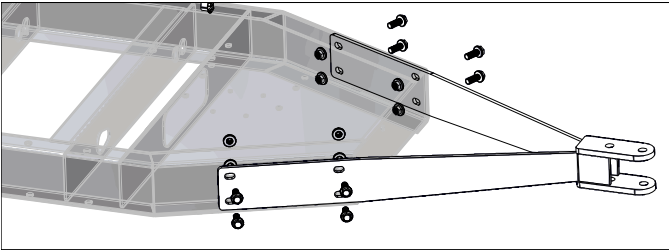
**Read and Understand the Owner's Manual** before using this sprayer. Test and use in accordance to instructions.  
**Read and Follow** chemical label instructions and wear protective gear when filling, using, cleaning and servicing the sprayer.

**Exercise Caution** in vehicle handling when towing/hauling a filled sprayer to avoid loss of control or overturning.  
**Keep Sprayer and Spray materials** away from other people, children and pets.  
**Do Not Turn on Power** to the sprayer, until ready to spray in order to avoid unintentional spray release.  
**Do Not Use** on steep slopes. A full sprayer could cause loss of control or overturn sprayer and vehicle.  
**Always operate** up and down a slope, never across the face of a slope.  
**Keep all movement on slopes** slow and gradual. Do not make sudden changes in speed, directions or turning. Do not start or stop suddenly when going uphill or downhill.  
**Stop on level ground**, set the parking brake and shut off engine before leaving the operator's position for any reason.  
**Keep all parts** in good condition and properly installed. Fix damaged or worn parts immediately.  
**Caution should be taken** when towing and/or using any sprayer. This sprayer combined with the weight distribution, turning radius and speed of vehicle can result in damage to vehicle and/or sprayer or severe injury or death, if not used properly.  
**Improper use of this sprayer or handling of chemicals could result in serious injury or illness, or could cause damage to the environment.**

### ~~~~~IMPORTANT REMINDER~~~~~

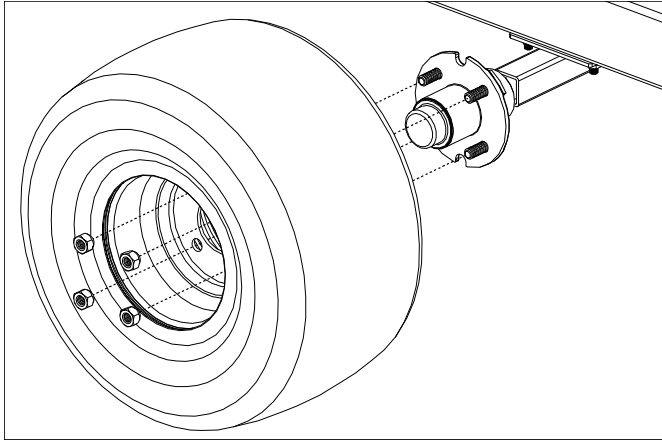
ADD proper oil to the engine crankcase and gasoline to the gas tank. Refer to the engine manual for the correct type and amount.

## Assembly Procedure



### Step 1

Bolt the tongue to the skid, using (8) 3/8" x 1" hex flange lockscrews and 3/8"-16 flange locknuts..



### Step 2

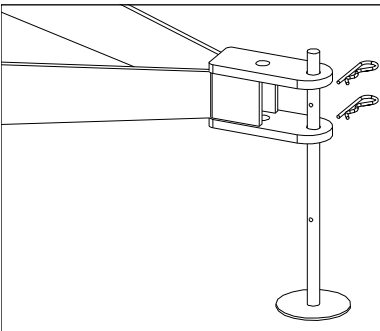
Attach the axle to the trailer frame with (4) bolts & nuts as shown.

### Step 3

Slide a wheel onto the hub of the axle and use the wheel nuts to hold the wheel in place. Repeat for other side.



**NOTE:** Maximum Speed - 10 MPH  
Refer to vehicle's manual for towing instructions.

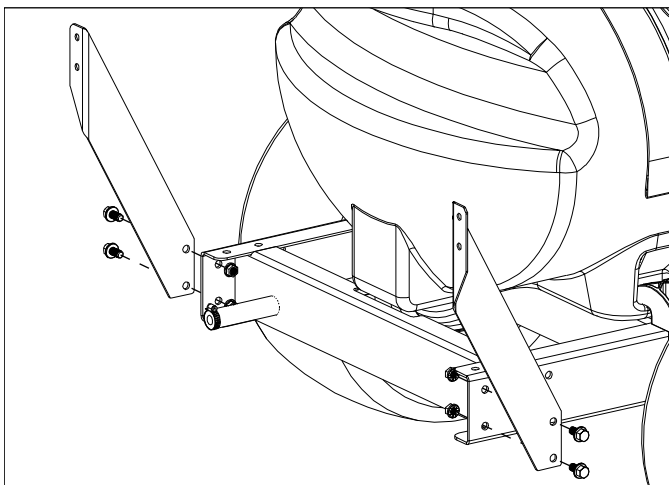
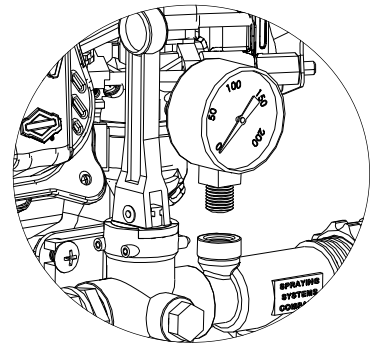


### Step 4

Insert the stand weldment in the hitch and retain with hitch pins.

### Step 5

Install the pressure gauge.  
Hand tighten securely.  
**\*\*DO NOT OVER-TIGHTEN\*\***



### Step 6

If attaching a boom, attach the boom mounts and feeder hose. Left Hand (LH) and Right Hand (RH) sides of the sprayer are determined as if you are standing behind the sprayer, looking at it (facing forward)

Mount the (LH) and (RH) boom mounts to the back of the frame (If not already done).

Locate both the (LH) & (RH) boom mounts, (4) 3/8"-16 x 3/4" bolt and (4) 3/8"-16 flanged whiz nuts.

Attach the boom mounts to the frame. Make sure the brackets are parallel with each other before tightening down the bolts.

Finally, attach the feeder hose to the hose barb on the manifold and the fitting on your boom.

- Make sure all hose clamps are tight before testing or spraying for the first time.

**\*\*The Sprayer is now ready to TEST w/plain water before actual use\*\***

**IMPORTANT:** Remove tank lid and be sure the tank is clean and free of any foreign material. Rinse tank out of any tank residue before filling with water to test.

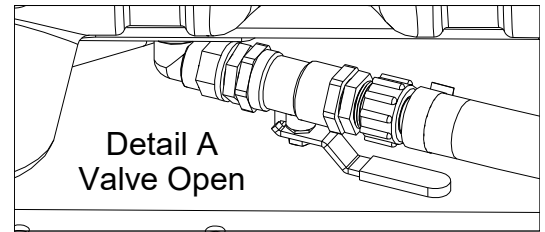
### Testing the Sprayer

1. Fill the tank about 1/2 full with plain water.

**Only fill the tank with what you're going to spray in a day, never leave chemicals sit in tank.**

2. Open the brass valve in the suction line (See Detail A) and allow water to flow to the pump. The valve is located at this point to enable the strainer to be taken apart for cleaning, while solution remains in the tank.

**CAUTION:** Always be sure that water (or solution) has reached the roller pump before starting your sprayer. If the pump is allowed to run dry, serious damage to the pump will result. Do not run your sprayer with the boom/handgun line closed AND the bypass line closed. Doing this will damage the pump.



3. It is always best to start the sprayer at little or no pressure. This sprayer is equipped with a spring loaded pressure relief/bypass valve. Turn the valve knob out to decrease pressure and in for increased pressure.

Bypass valve is the “pressure control” for the entire plumbing system. The more the valve is open, the lower your line pressure. Almost fully closed provides maximum pressure to your boom and/or handgun. **NEVER run your system with this valve 100% closed.**

4. You may now start the sprayer engine following the engine manufacturers instructions. Let the sprayer run at low pressure until water has reached the handgun and all air has been purged from the system.

**Caution:** Care must be taken, being sure the handgun is secured in the operators hand. If this is not done a recoiling action may occur causing damage or personal injury.

Conditions of weather and terrain must be considered when setting the sprayer. Do not spray on windy days. Protective clothing must be worn in some cases

**Be sure to read the chemical label(s) before application!**

### Information About the Sprayer

In this pumping system, solution is drawn from the tank and forced to a planned source, such as boom nozzles or handgun. The pressure is controlled by opening/closing the valve which recirculates solution back into the tank.

### Priming the pump

To help prime the pump, keep the inlet or suction line as short as possible with a minimum of bends, elbows and kinks. Make sure all connections are tight and do not leak air. Make sure the line strainer is free of debris. If pump does not self-prime, disconnect suction hose, fill with water and reconnect to liquid source. Often a squirt of oil into the ports of the pump will seal clearances and help priming. Facing the pump, the suction port is on your left.

### Operation

Always fill the tank 1/2 full with water first and then add the chemical slowly, mixing as you pour the chemical into the tank and fill the rest of the way. You may use the bypass in order to mix the chemical and water.

**Only fill the tank with what you're going to spray in a day, never leave chemicals sit in tank.**

The pumping system draws solution from the tank, through the strainer/filter and to the pump. The pump forces the solution under pressure to the handgun and/or boom nozzles.

- Activate the handgun by squeezing the handle lever
- Rotating adjustable nozzle tip on the handgun will change the tip pattern from a straight stream to a cone pattern (fine mist)

### Tank Care & Maintenance

**Warning:** Do not use the tank as a container for fuel oils, kerosene, gasoline or any other petroleum distillate product. All polyolefins are softened and permeated by such products. In an enclosed area the vaporization of these materials from the outside surface of the tank could create a dangerous condition.

The tank should not be used as a pressure vessel nor used with chemicals or solutions having a weight of more than 12 pounds per gallon.

Store the tank in a dry dark place when not in use. Storage out of sunlight will prolong the life of the tank.

Do not drop, strike or kick the tank, especially at low temperatures. Tanks become brittle and are subject to cracking at temperatures below 20° Fahrenheit.

Always flush the tank with water and a neutralizing agent at the end of each use, to prevent contamination of solutions.

## Maintenance During/After Spraying

Periodically close the suction line valve and check the line strainer and clean the screen. Stop the engine and shut off the valve near the strainer. Remove the bowl and screen portions of the strainer and wash them free from all impurities. You may also drain the tank by uncoupling the suction line near the strainer. Open the valve and pour the contents into another container. Read the chemical label for disposal instructions.

Proper care and maintenance will keep your pump wear at a minimum and will keep it running smoothly and trouble-free for a long time and prolong the life of your sprayer.

After use, fill the sprayer tank part way with water. Start the sprayer and allow the water to pump through the entire plumbing system and nozzles. Drain and then refill half full with plain water, add the recommended amount of good quality tank cleaner such as FIMCO Sprayer Tank Neutralizer and Cleaner. (If no tank cleaner is available, you may substitute dish soap for this step, about 1-2 oz. per gallon). But a neutralizer/cleaner should be used to thoroughly clean the system. Turn sprayer on and circulate through system for 15 minutes and then spray out through handgun nozzle (and boom nozzles if applicable). Refill tank half way with clean water and repeat. Follow the chemical manufacturer's disposal instructions of all wash or rinsing water.

For the boom (if applicable) remove the tips and screens from the nozzle assemblies. Wash these items out thoroughly. Blow the orifice clean and dry. If the orifice remains clogged, clean it with a fine bristle (NOT WIRE) brush or with a toothpick. Do not damage the orifice. Water rinse and dry the tips before storing.

Flush the pump after each use. One of the common causes of faulty pump performance is "gumming" or corrosion inside the pump. This prevents the rollers from moving freely. Flush the pump with a solution that will neutralize liquid pumped. A rust inhibitor can also be squirted into the ports of the pump. Turn shaft several times to draw protective liquid through pump and coat entire inner surface.

**WARNING:** Never pump corrosive or abrasive liquids as these will cause rapid wear or deterioration of body, rotor, shaft and seals in the pump. Never run pump dry. Some chemicals will damage the pump valves if allowed to soak untreated for a length of time! ALWAYS flush the pump as instructed after each use. DO NOT allow chemicals to sit in the pump for extended times of idleness. Failure to follow this warning will void the product warranty.

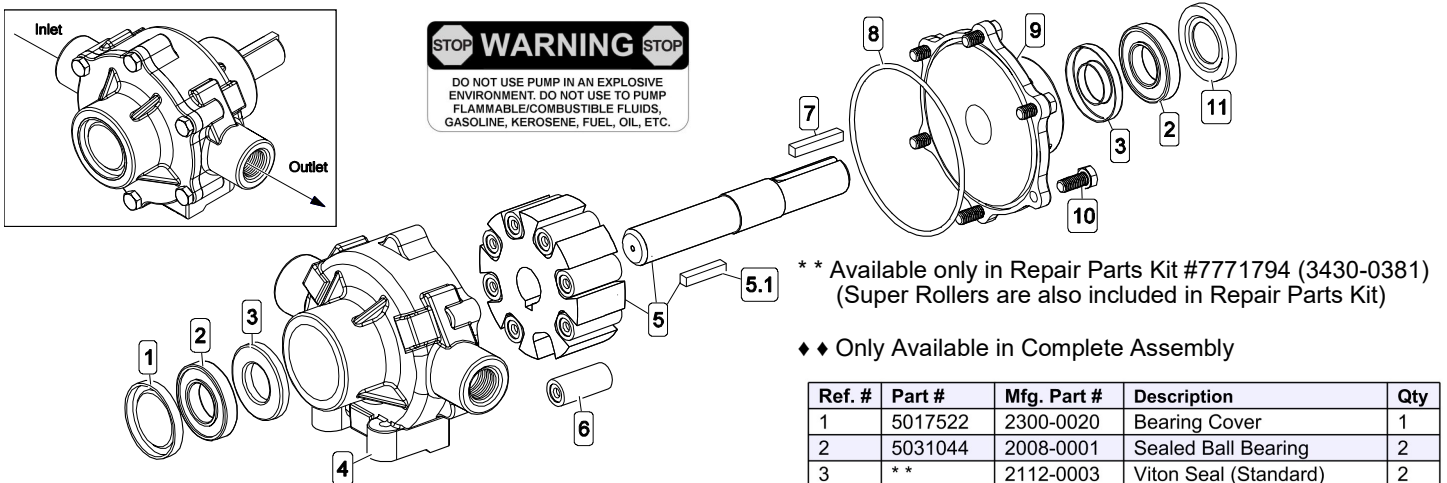
**Follow the chemical manufacturer's instructions on disposal of all waste water from the sprayer.**

## Winter Storage

Prepare the sprayer for end-of-season storage. Drain all water out of your sprayer, paying special attention to the pump, handgun and valve(s). These items are especially prone to damage from chemicals and freezing weather.

The sprayer should be winterized before storage by pumping a solution of automotive antifreeze (containing a rust inhibitor) through the entire plumbing system. Make sure to operate the boom and handgun until you see the antifreeze spraying from the nozzles. This antifreeze solution should remain in the plumbing system during the winter months. It is nearly impossible to drain all of the water from the sprayer and any trapped water can freeze in cold weather and damage parts of the sprayer. Pumping the antifreeze through the system will displace the water and help prevent this damage.

When spring time comes and you are preparing your sprayer for the spray season, rinse the entire plumbing system out, clearing the lines of the antifreeze solution. Dispose of antifreeze and flush water properly.



## 8-Roller Pump

Reverse Rotation (Cast Iron)

7560C-R (Fimco #5271509)

Exploded View/Parts List

Ref. #	Part #	Mfg. Part #	Description	Qty
1	5017522	2300-0020	Bearing Cover	1
2	5031044	2008-0001	Sealed Ball Bearing	2
3	**	2112-0003	Viton Seal (Standard)	2
4	♦♦	0104-7500C	Body (Cast Iron) w/Seal	1
5	5172113	0308-7560C	Rotor w/Shaft Assembly	1
5.1	1610-0059	1610-0059	Key (Stainless Steel)	1
6	5112030	1005-0004	Super Roller (Standard)	8
7	5089012	1610-0005	Key	1
8	**	1720-0014	O-Ring Gasket for Endplate	1
9	♦♦	0204-7500C	Endplate (Cast Iron) w/Seal	1
10	5034038	- - -	H.H.C.S. 5/16"-18nc x 3/4"	6
11	5017523	2300-0022	Shaft Bearing Cover	1

## Roller Pump General Safety Information

1. Use a pressure relief device on the discharge side of the pump to prevent damage from pressure buildup when the pump discharge is blocked or otherwise closed and the power source is still running.
2. **WARNING:** Never pump flammable or explosive fluids such as gasoline, fuel oil, kerosene, etc. Never use in explosive atmospheres. The pump should be used only with liquids compatible with the pump component materials. Failure to follow this warning can result in personal injury and/or property damage and will void the product warranty.
3. Never pump acids (i.e. acid fertilizer) with Super Rollers!
4. Never run the pump faster than maximum recommended speed.
5. Never pump at pressures higher than the maximum recommended pressure.
6. Never pump liquids at temperatures higher than the recommended maximum temperatures (140°F/60°C).
7. Make certain that the power source conforms to the requirements of your equipment.
8. Provide adequate protection in guarding around the moving parts such as the shaft and pulleys.
9. Disconnect power before servicing.
10. Release all pressure within the system before servicing any component.
11. Drain all liquids from the system before servicing any component.
12. Check all hoses for weak or worn condition before each use. Make certain that all connections are tight and secure.
13. Periodically inspect the pump and the system components. Perform routine maintenance as required.
14. Never operate a gasoline engine in an enclosed area. Be sure the area is well ventilated.
15. Use only pipe, hose and fittings rated for the maximum psi rating of the pump.
16. Never use pump for pumping water or other liquids for human or animal consumption.

## Roller Pump Operation & Maintenance

**WARNING:** Never pump corrosive or abrasive liquids as these will cause rapid wear or deterioration of the body, rotor, shaft and seals in the pump. The pump should be used on with liquids compatible with pump component materials. Never exceed maximum specified rpm and pressure. Never run pump dry. Failure to follow this warning will void the product warranty.

### Priming the Pump:

To help prime the pump, keep the inlet or suction line as short as possible with a minimum of bends, elbows and kinks. Make sure all connections are tight and do not leak air. Make sure line strainer is free of debris. If pump does not self-prime, disconnect suction hose, fill with water and reconnect to liquid source. Often a squirt of oil into the ports of the pump will seal clearance and help priming.

### Care of the Pump:

Proper care and maintenance will keep your pump wear at a minimum and will keep it running smoothly and trouble-free for a long time.

### Flush the Pump After Each Use

**One of the common causes of faulty pump performance is “gumming” or corrosion inside the pump. This prevents rollers from moving freely in their rotor slots. Flush the pump with a solution that will neutralize liquid pumped, mixed according to manufacturer’s directions.**

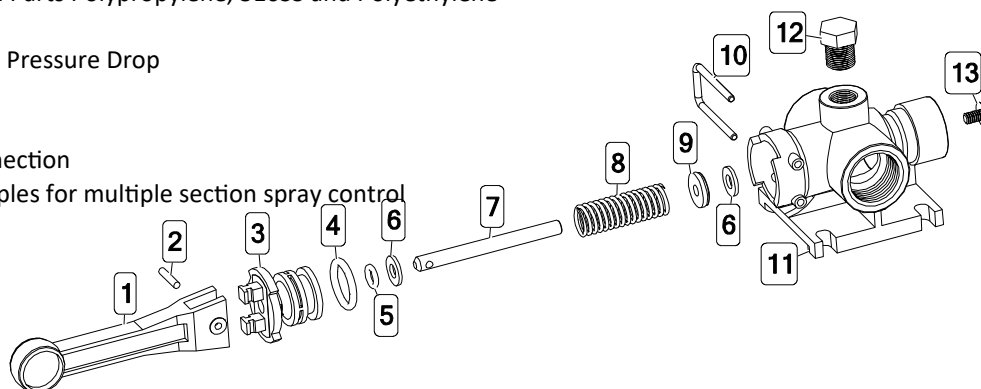
### To Prevent Corrosion:

After cleaning pump as above, flush it with a 50-50 solution of permanent-type automotive antifreeze (containing a rust inhibitor) and water. A rust inhibitor can also be squirted into the ports of the pump. Turn shaft several times to draw protective liquid through pump and coat entire inner surface. Drain pump and plug ports to keep out air during storage. For short periods of idleness, noncorrosive liquids may be left in the pump, but air must be kept out. Plug ports or seal port connections.

Troubleshooting		
Symptom	Probable Cause(s)	Corrective Action
Pump Does Not Prime	Leak in suction line	Check hose and fittings for leaks and correct
	Obstruction in suction line	Inspect hose for debris or loose inner liner in hose
	Suction hose sucked to bottom or side of tank	Cut a notch or "V" in end of suction hose
	Rollers stuck in pump	Disassemble pump and inspect rollers
	Pump seals leaking air	Replace seals
Loss of Pressure	Clogged suction strainer	Check strainer and clean it regularly
	Kinked or blocked suction hose	Inspect suction hose and repair as necessary
	Air leak in inlet side plumbing	Check hose and connections for leaks Use pipe joint sealant and retighten connections
	Relief valve setting too low or weakened spring	Check relief valve and correct setting
	Faulty Gauge	Replace gauge
	Pump seals leak air	Replace seals
	Nozzle orifices worn	Replace nozzles
Pump worn	Repair pump	
Pump will not turn	Corrosion (rust), scale or residue	Loosen endplate bolts. Squirt oil into ports to help free rotor. Retighten bolts.
	Solid object lodged in pump.	Disassemble pump and remove objects

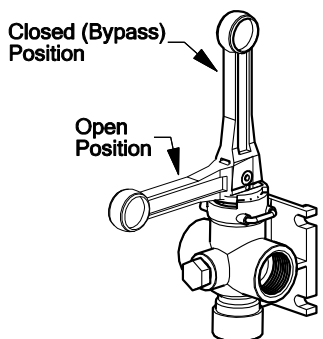
## 'Directo Valve' - Manually Operated Control Valve

- Corrosion Resistant Materials: Wetted Parts Polypropylene, 316SS and Polyethylene
- Maximum Pressure = 150 p.s.i.
- Large Capacity - 12.5 G.P.M. @ 5 p.s.i. Pressure Drop
- 3/4" NPT (F) Inlet Connection
- 1/2" NPT (F) Spray Line Connection
- 3/4" NPT (F) Continuous By-Pass Connection
- Valves may be connected w/close nipples for multiple section spray control



Fimco #	Mfg. Part #	Description
5143316	AA6B	Directo-Valve (AA6B)
5168718	PK-AB6B-KIT	Repair Kit, Items Marked **

Ref. #	Part #	Mfg. Part #	Description	Qty
1	5078178	CP36301-NY	Handle (Gray)	1
2	5101220	CP36308-SS	Groove Pin	1
3	5086043	CP36302-PP	Poly Body Insert, (Black)	1
4	**	CP7717-2/209-VI	O-Ring, Viton	1
5	**	CP7717-2/108-VI	O-Ring, Viton	1
6	◆◆	CP36307-PPB	Washer	2
7	◆◆	CP36304-SS	Stem	1
8	◆◆	CP36306-302SS	Spring	1
9	**	CP38726-VI	Shut-Off Washer, Viton	1
10	◆◆	CP36309-302SS	Retaining Clip	1
11	5002476	CP36303-PP	Poly Body (AA6B)	1
12	5102022	F14	Pipe Plug, 1/4" MNPT	1
13	5117281	CP38725-SS	#10-24 x 5/16" Phillips Truss Head Mach. Screw	1



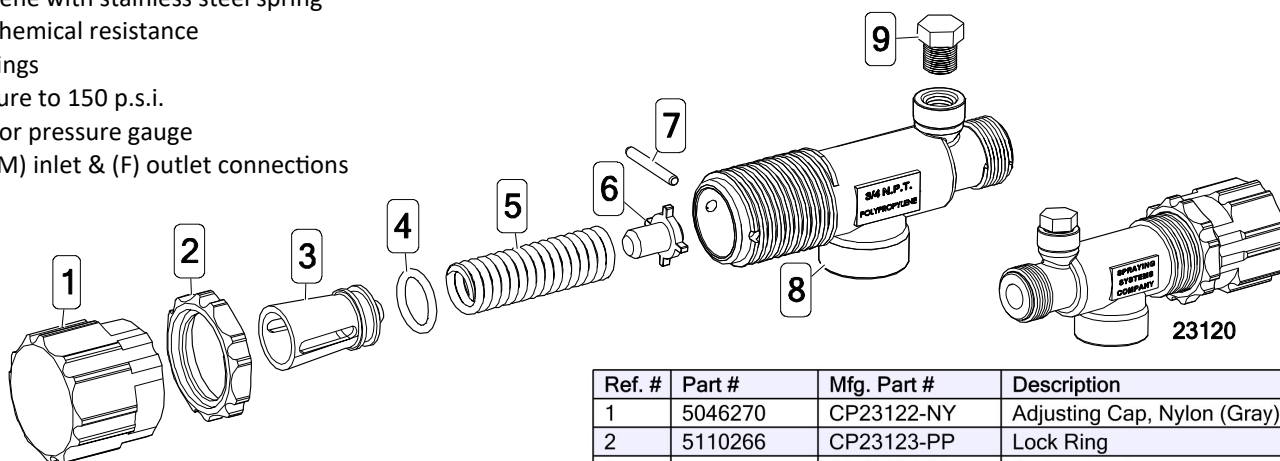
\*\* Available only in Repair Kit

◆◆ Only Available in Complete Assembly

## Piston Type Pressure Relief/Regulating Valves

Bypasses excess fluid. Adjustable to maintain control of line pressure at any pressure within the valve operating range. Selected pressure setting firmly held in place by locknut. Extra large passages to handle large flows.

- Polypropylene with stainless steel spring
- Excellent chemical resistance
- EPDM O-Rings
- Fore pressure to 150 p.s.i.
- 1/4" port for pressure gauge
- 3/4" NPT (M) inlet & (F) outlet connections



Ref. #	Part #	Mfg. Part #	Description
1	5143199	23120-3/4-PP	Pressure Relief Valve, (3/4" NPT)
2	5168717	PK-AB23120-KIT	Repair Kit, Items Marked **

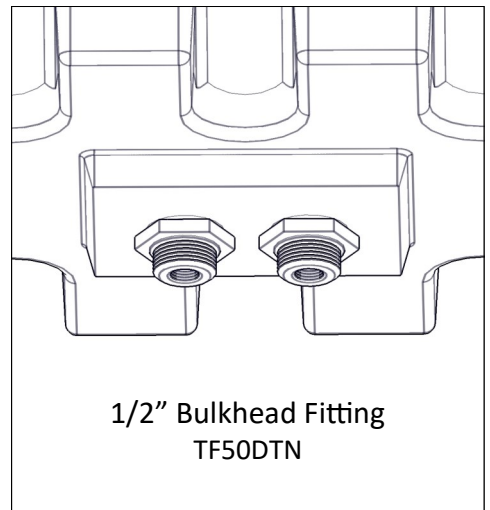
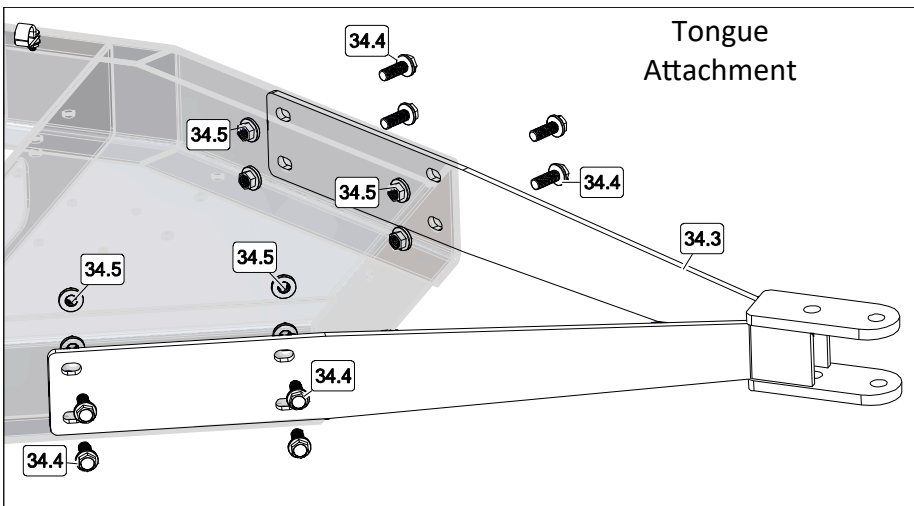
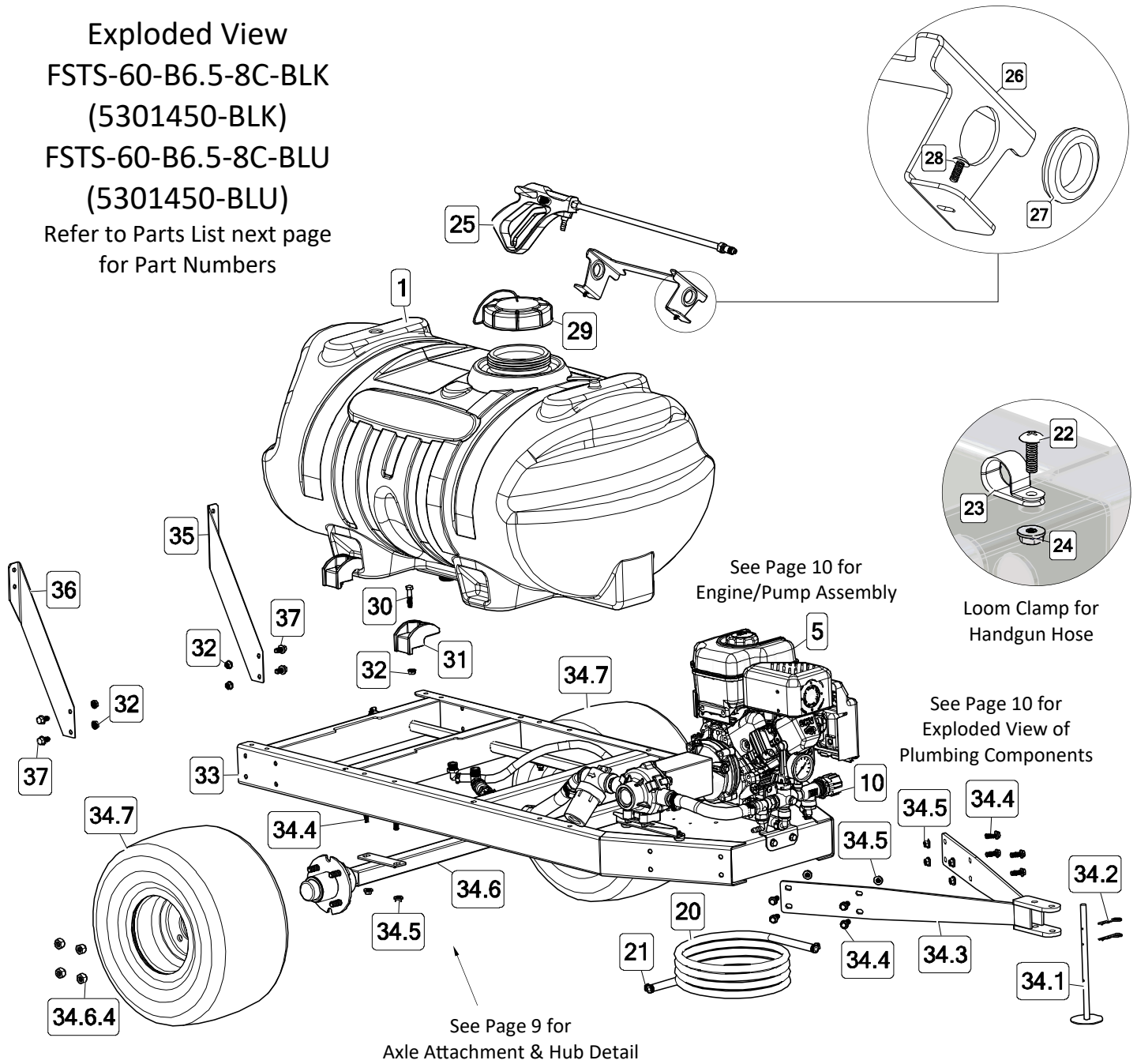
Ref. #	Part #	Mfg. Part #	Description
1	5046270	CP23122-NY	Adjusting Cap, Nylon (Gray)
2	5110266	CP23123-PP	Lock Ring
3	◆◆	CP23124-PP	Spring Retainer
4	**	CP7717-15-EPR	O-Ring, EPDM Rubber
5	**	CP23127-302SS	Spring
6	◆◆	CP23125-PP	Guide Seat
7	**	CP23126-302SS	Retaining Pin
8	CP23121-PP	CP23121-PP	Poly Body (3/4" NPT)
9	5102022	F14	Pipe Plug, 1/4" MNPT

\*\* Available only in Repair Kit

◆◆ Only Available in Complete Assembly

Exploded View  
 FSTS-60-B6.5-8C-BLK  
 (5301450-BLK)  
 FSTS-60-B6.5-8C-BLU  
 (5301450-BLU)

Refer to Parts List next page  
 for Part Numbers



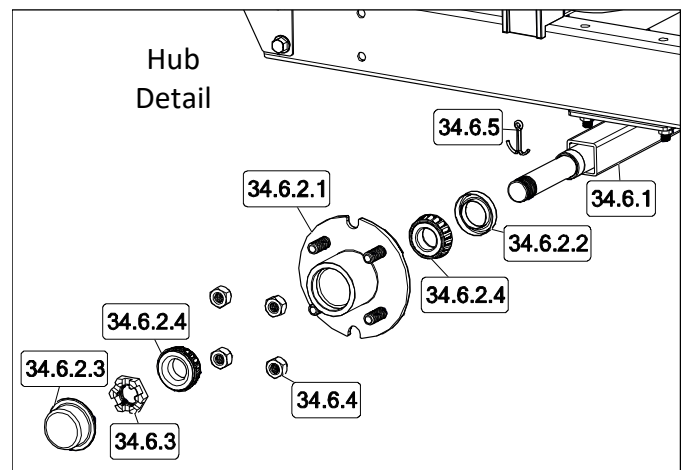
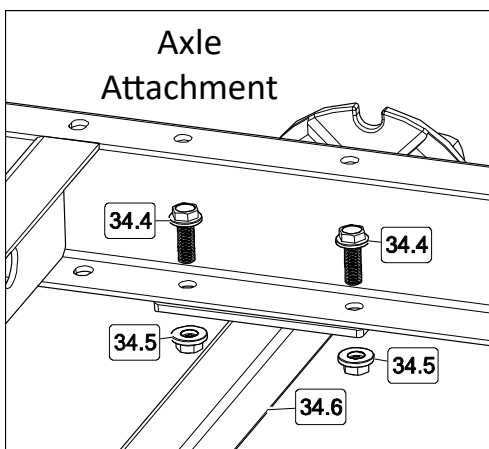


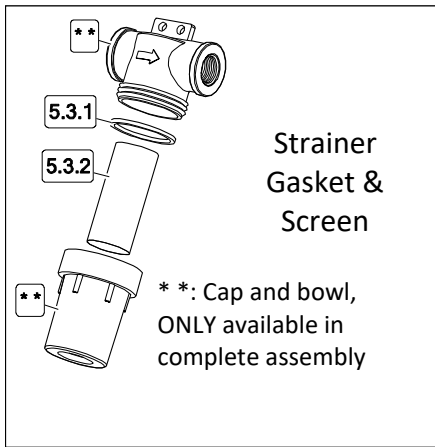
## Parts List: FSTS-60-B6.5-8C (5301450)

Ref. #	Part #	Description	Qty
1	5169250	60 Gallon Elliptical Tank (Yellow)	1
1.1	TF50DTN	1/2" Bulkhead Fitting Assembly	2
2	5274939	Tank Valve Assembly	1
2.1	5010243	Poly Street Elbow, (90°) 1/2" MNPT x 1/2" FNPT	1
2.2	5011147	Reducing Nipple, 3/4" MNPT x 1/2" MNPT	1
2.3	5143190	3/4" "T-800" Brass Ball Valve	1
2.4	5005196	Poly Adapter, 3/4" MNPT x 3/4" MGHT	1
2.5	5016066	1" Rubber Washer	1
2.6	5149037	Poly Swivel, 3/4" Flat Seat Hose Barb	1
2.7	5006209	Poly Knurled Swivel Nut, 3/4" FGHT	1
3	5020233	Hose, 3/4"-2 Brd. x 20"	1
4	5051024	Hose Clamp, 3/4"	2
5	5275131	Engine/Pump Assembly	1
5.1	5067127	Poly Fitting, 3/4" MNPT x 3/4" HB	1
5.2	5010249	45° Poly Street Elbow, 3/4" NPT	1
5.3	5116322	3/4" Black Poly Strainer	1
5.3.1	5072229	EPDM Gasket	1
5.3.2	5116323	40 Mesh Screen	1
5.4	5011140	Poly Close Nipple, 3/4" MNPT	1
5.5	5271509	8-Roller Pump (7560C-R) Reverse Rotation	1
5.6	5034634	5/16"-18 x 5/8" Hex Bolt	2
5.7	5023052-BLK	Torque Bracket	1
5.8	5006186	#10-24 Serrated Fling Hex Nut	2
5.9	5040004	Rubber-Headed Screw Bumper (#10-24)	2
5.10	5005177	Adapter & Kit (Coupler)	1
5.11	5089033	Key, 0.1875 x 0.1875 x 1.375 Long	1
5.12	5120044-BLK	Shield	1
5.13	5152099	205cc B&S 8.0 Gross Torque w/Gear Reduction	1
5.14	5067126	Poly Fitting, 3/4" MNPT x 5/8" HB	1
6	5034638	5/16"-18 x 1 1/2" Fling Hex Bolt	4
7	5006307	5/16-18 Hex Fling Whiz Nut	6
8	5020596	Hose, 5/8"-1 Brd. x 9"	1
9	5051023	Hose Clamp, 5/8"	2
10	5282415	Valve Assembly	1
10.1	5067132	Poly Fitting, 1/2" MNPT x 5/8" HB	1
10.2	5010230	Poly Tee, 1/2" FNPT	1
10.3	5011147	Poly Reducing Nipple, 3/4" MNPT x 1/2" MNPT	1
10.4	5143316	Directo-Valve (AA6B)	1
10.5	5143199	Pressure Relief Valve, (3/4" NPT)	1
10.6	5010202	Poly Elbow, 1/2" MNPT x 3/8" HB	1
10.7	5010203	Poly Elbow, 1/2" MNPT x 1/2" HB	1
10.8	5010207	Poly Elbow, 3/4" MNPT x 1/2" HB	1
11	5117287	1/4"-20 x 3/4" PH Truss Head Screw	4
12	5117323	5/16"-18 x 3/4" Fling Hex Bolt	2

Ref. #	Part #	Description	Qty
13	5006306	1/4-20 Hex Fling Whiz Nut	4
14	5095366-BLK	Manifold Mount	1
15	5167034	2-1/2" Gauge, Liquid-Filled, 0-400# PSI	1
16	5020539	Hose, 1/2"-1 Brd. x 78"	1
17	5051114	Hose Clamp, 1/2"	4
18	5020595	Hose, 1/2"-1 Brd. x 51"	1
19	5010203	Poly Elbow, 1/2" MNPT x 1/2" HB	1
20	5020527	Hose, 3/8"-1 Brd. x 25 Ft.	1
21	5051144	Hose Clamp, 3/8"	2
22	5117167	#10-24 x 5/8" PH Truss Head Screw	1
23	5051122	5/8" Black Nylon Loom Cable Clamp	1
24	5006186	#10-24 Serrated Fling Hex Nut	1
25	5273959	Deluxe Pistol-Grip Handgun w/X-26 Tip	1
25.1	5018331	Brass Handgun Tip (X-26)	1
26	5038775-BLK	Handgun Bracket	1
27	5075014	Rubber Grommet (Black)	2
28	5117234	#10-24 x 1/2" PH Truss Head Screw	2
29	5058188	Tank Lid w/Lanyard	1
30	5034101	3/8"-16 x 1 3/4" Hex Bolt	4
31	5038698	Plastic Tank Hold-Down Leg Clip	4
32	5006259	3/8-16nc Hex Fling Whiz Nut	8
33	5278082*	Skid Frame (Specify -BLK or -BLU)	1
34	5301444	FSTK-60 Trailer Kit	1
34.1	5272092-BLK	Stand Weldment	1
34.2	5101065	Hair Pin, #211 x 2.50	2
34.3	5274957-BLK	Tongue Weldment (60 Gallon Skid)	1
34.4	5117307	3/8"-16 x 1" Fling Whiz Lockscrew	12
34.5	5006259	3/8"-16 Hex Fling Whiz Locknut	12
34.6	5274955	Axle & Hub Assembly	1
34.6.1	5274954-BLK	Axle Weldment (ATVTS-60)	1
34.6.2	5272465	Hub Assembly, 4-Bolt	2
34.6.2.1	5085018	Hub Assembly (4-Stud)	1
34.6.2.2	5072471	Grease Seal	1
34.6.2.3	5046327	Grease Cap	1
34.6.2.4	5031139	Cone Bearing	2
34.6.3	5006300	Castle Nut, 1"	2
34.6.4	5006301	1/2"-20 Hex Cone Wheel Nut	8
34.6.5	5101081	Cotter Pin, 5/32" x 2-1/4"	2
34.7	5272464-SVR	Wheel, 18 x 8.5 - 8 - 4-Bolt	2
35	5038831-BLK	Boom Mount Bracket (LH)	1
36	5038835-BLK	Boom Mount Bracket (RH)	1
37	5034660	3/8"-16 x 3/4" Fling Hex Bolt	4

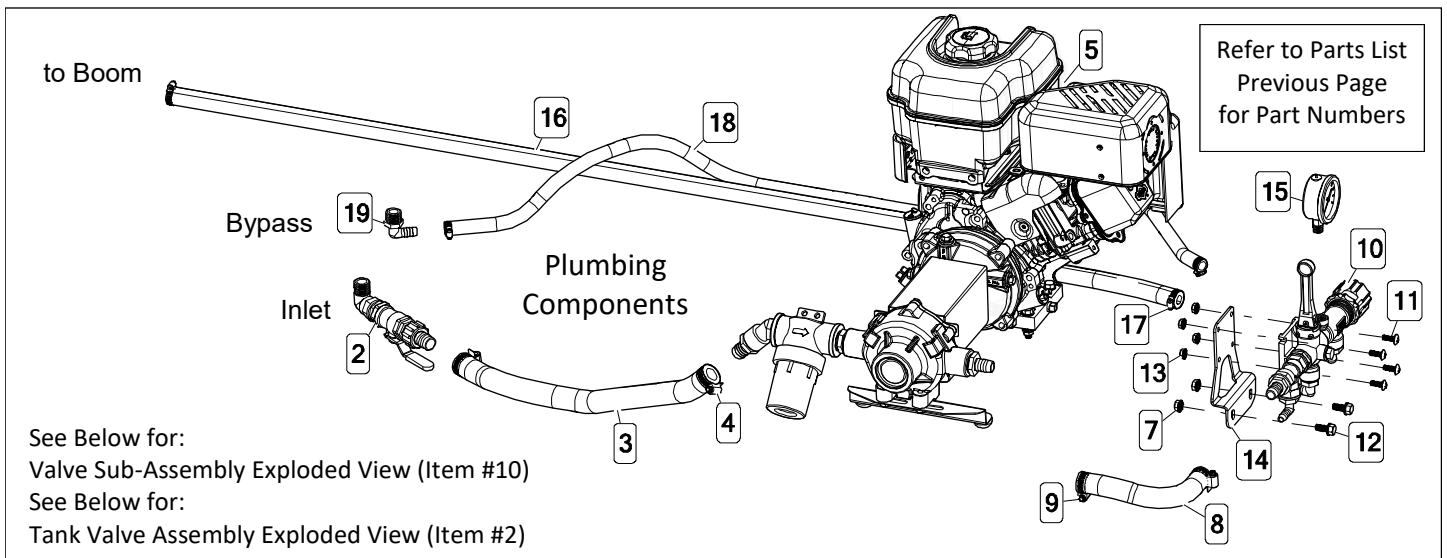
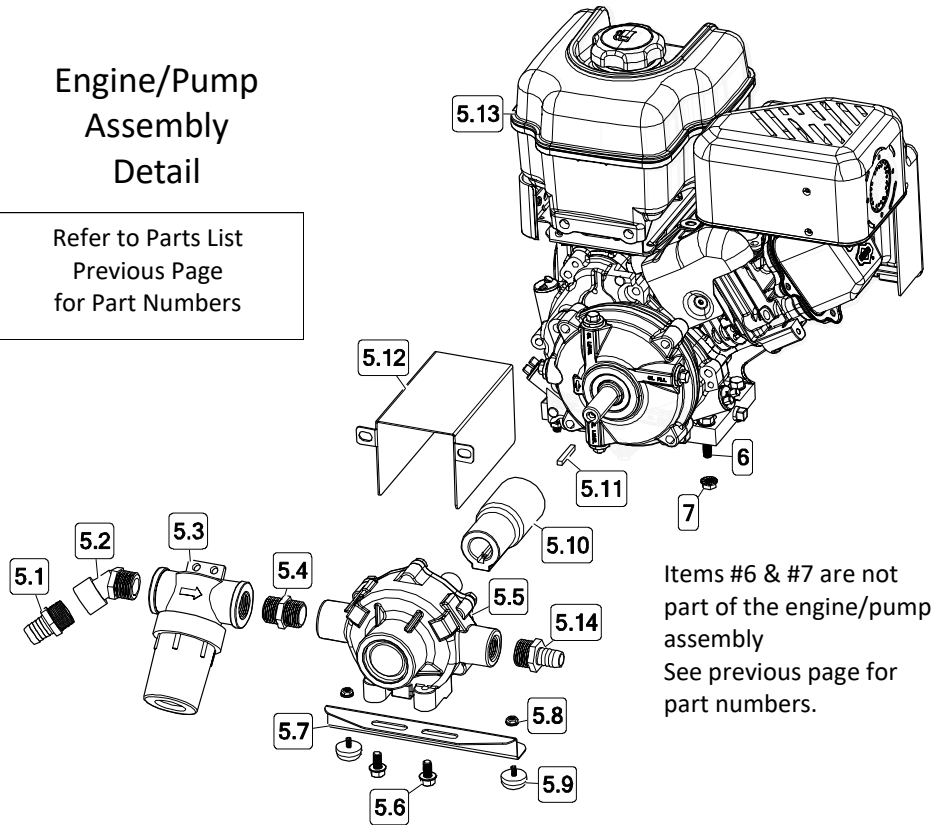
-\* = Specify -BLK (Black) or -BLU (Blue)



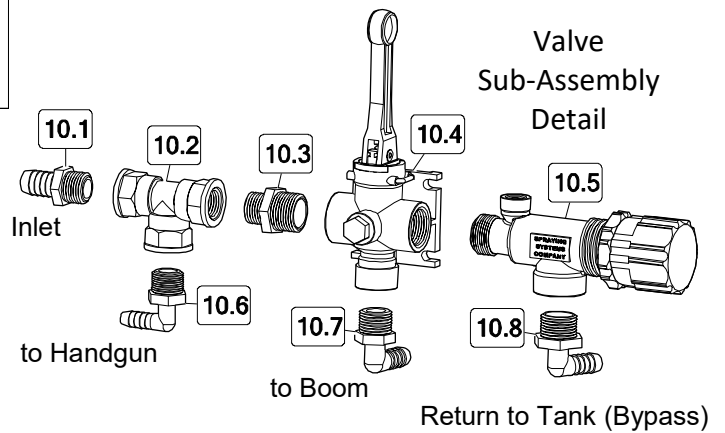
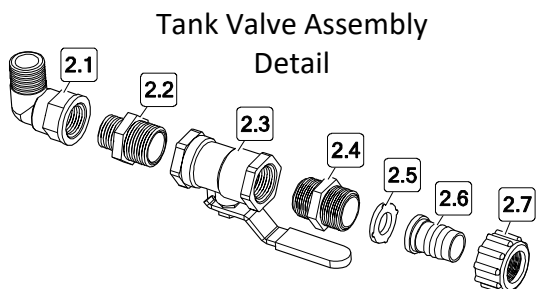


### Engine/Pump Assembly Detail

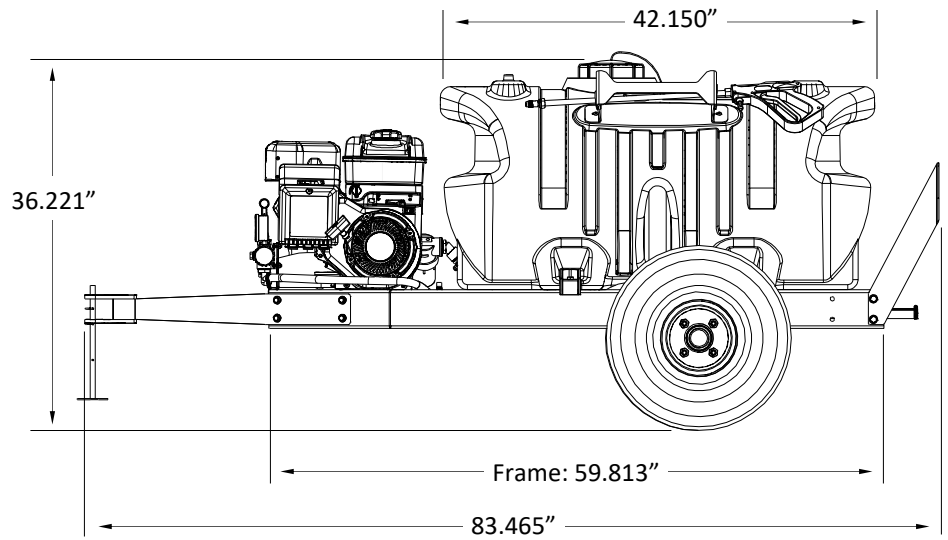
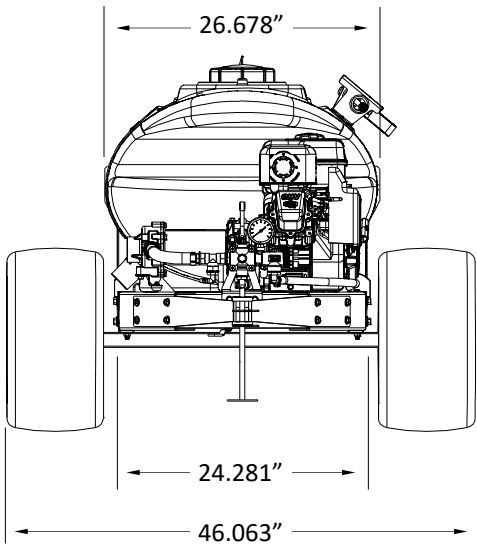
Refer to Parts List Previous Page for Part Numbers



Refer to Parts List Previous Page for Part Numbers



Approx. Dimensions



NOTES:

## Warranty Info

### LIMITED WARRANTY FOR NEW AG SPRAY EQUIPMENT

**WHO MAY USE THIS LIMITED WARRANTY.** This limited warranty (the “Limited Warranty”) is provided by Ag Spray Equipment to the original purchaser (“you”) of the Equipment (as defined below) from Ag Spray Equipment or one of Ag Spray Equipment’s authorized dealers. This Limited Warranty does not apply to any subsequent owner or other transferee of the Equipment. THIS LIMITED WARRANTY GIVES YOU SPECIFIC LEGAL RIGHTS, AND YOU MAY ALSO HAVE OTHER RIGHTS WHICH VARY FROM STATE TO STATE.

**WHAT THIS LIMITED WARRANTY COVERS AND FOR HOW LONG.** Ag Spray Equipment warrants that any new Equipment will be free from defects in material and workmanship for a period of **one (1) year** (homeowner), **90 days** (commercial user), after delivery of the Equipment to you (the “Warranty Period”). The Warranty Period is not extended if Ag Spray Equipment repairs or replaces the Equipment.

**WHAT IS NOT COVERED BY THIS LIMITED WARRANTY.** This Limited Warranty does not apply to: (1) used Equipment; (2) any Equipment that has been altered, changed, repaired or treated since its delivery to you, other than by Ag Spray Equipment or its authorized dealers; (3) damage or depreciation due to normal wear and tear; (4) defects or damage due to failure to follow Ag Spray Equipment’s operator’s manual, specifications or other written instructions, or improper storage, operation, maintenance, application or installation of parts; (5) defects or damage due to misuse, accident or neglect, “acts of God” or other events beyond Ag Spray Equipment’s reasonable control; (6) accessories, attachments, tools or parts that were not manufactured by Ag Spray Equipment, whether or not sold or operated with the Equipment; or (7) rubber parts, such as tires, hoses and grommets.

**HOW TO OBTAIN WARRANTY SERVICE.** To obtain warranty service under this Limited Warranty, you must (1) provide written notice to Ag Spray Equipment of the defect during the Warranty Period and within **thirty (30)** days after the defect becomes apparent or the repair becomes necessary, at the following address: Ag Spray Equipment, 1000 Fimco Lane, North Sioux City, SD 57049; and (2) make the Equipment available to Ag Spray Equipment or an authorized dealer within a reasonable period of time. For more information about this Limited Warranty, please call: **800-274-1025** or your local Ag Spray location.

**WHAT REMEDIES ARE AVAILABLE UNDER THIS LIMITED WARRANTY.** If the conditions set forth above are fulfilled and the Equipment or any part thereof is found to be defective, Ag Spray Equipment shall, at its own cost, and at its option, either repair or replace the defective Equipment or part. Ag Spray Equipment will pay for shipping and handling fees to return the repaired or replacement Equipment or part to you.

**LIMITATION OF IMPLIED WARRANTIES AND OTHER REMEDIES.** THE REMEDIES DESCRIBED ABOVE ARE YOUR SOLE AND EXCLUSIVE REMEDIES, AND AG SPRAY EQUIPMENT’S SOLE LIABILITY, FOR ANY BREACH OF THIS LIMITED WARRANTY. TO THE EXTENT APPLICABLE, ANY IMPLIED WARRANTIES, INCLUDING, WITHOUT LIMITATION, THE IMPLIED WARRANTIES OF MERCHANTABILITY AND FITNESS FOR A PARTICULAR PURPOSE, SHALL BE LIMITED IN DURATION TO THE WARRANTY PERIOD, AND THE REMEDIES AVAILABLE FOR BREACH THEREOF SHALL BE LIMITED TO THE REMEDIES AVAILABLE UNDER THIS EXPRESS LIMITED WARRANTY. SOME STATES DO NOT ALLOW LIMITATIONS ON HOW LONG AN IMPLIED WARRANTY LASTS, SO THE ABOVE LIMITATION MAY NOT APPLY TO YOU. IN NO EVENT SHALL AG SPRAY EQUIPMENT’S LIABILITY UNDER THIS LIMITED WARRANTY EXCEED THE ACTUAL AMOUNT PAID BY YOU FOR THE DEFECTIVE EQUIPMENT, NOR SHALL AG SPRAY EQUIPMENT BE LIABLE, UNDER ANY CIRCUMSTANCES, FOR ANY CONSEQUENTIAL, INCIDENTAL, SPECIAL OR PUNITIVE DAMAGES OR LOSSES, WHETHER DIRECT OR INDIRECT. SOME STATES DO NOT ALLOW THE EXCLUSION OR LIMITATION OF INCIDENTAL OR CONSEQUENTIAL DAMAGES, SO THE ABOVE LIMITATION OR EXCLUSION MAY NOT APPLY TO YOU.